



# WASATCH SOFTTRIP® TX FOR TEXTILE PRINTING

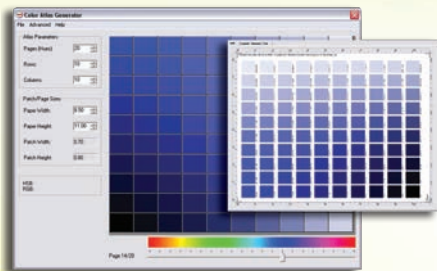
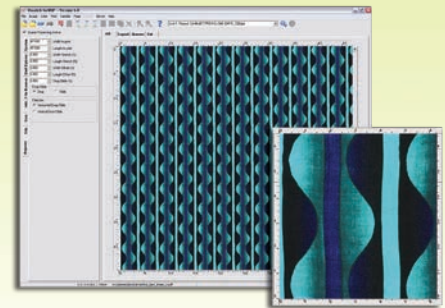
## DIGITAL FABRIC PRINTING TOOLKIT

Developed exclusively for the needs of textile printers, SoftRIP TX is equipped with the tools you need to make your transition to digital printing seamless. With all the functionality of the original SoftRIP print management package, plus specialty features for textile printing, SoftRIP TX provides performance you won't find in any other RIP. Whatever your textile printing goals, you will succeed with Wasatch SoftRIP TX.



### Efficient Repeats

Creating repeats in your design applications creates huge files and painful processing times. Wasatch SoftRIP TX uses special halftoning and re-sampling algorithms to ensure seamless repeats, needing only to RIP a single pattern and efficiently repeating it during printing. You can even customize your repeats with advanced drop and slide controls.

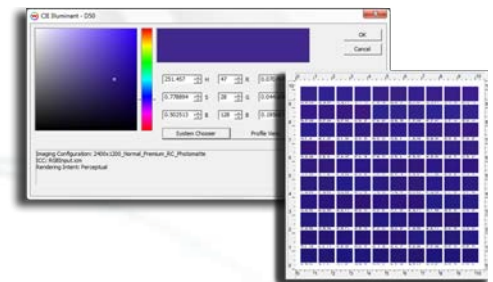


### Exact Color Atlas Generator

The Color Atlas Generator makes it easy to match colors accurately no matter how complicated your post processing. Simply specify and print a range of color swatches on your target fabric and perform your finishing steps. To reproduce exact colors, pick your desired swatch and enter its RGB value into SoftRIP or your graphics application.

### Accurate Color Neighborhood Analyzer

The Color Neighborhood Analyzer makes it easy to match spot colors perfectly, even when working with difficult media. This tool is a good supplement to the Color Atlas Generator but the Color Neighborhood Analyzer works well when a more targeted tool is needed. Specify a color and this impressive tool creates a targeted 100-patch test pattern centered on your color, making it simple to achieve your desired spot color every time.



333 South 300 East  
Salt Lake City, UT 84111, USA



+1.801.575.8043  
800.894.1544

www.wasatch.com



# DIGITAL PRINTING EXCELLENCE

## THE #1 RIP FOR TEXTILE PRINTING

“There is a new generation of textile designers emerging from our universities. They are creative, they know what they want, and they are comfortable with new technologies that enable them to be much more productive than previous generations of designers. Wasatch SoftRIP TX is an example of that enabling new technology.”

*Professor Hitoshi Ujiie, Philadelphia University, School of Textiles and Materials Technology*

### Textile Features for Great Designs

- Specialized re-sampling and halftoning eliminates seams between repeats
- RIP a single pattern and efficiently repeat it during printing
- Innovative features increase design options while reducing processing times
- Color Database feature maintains a list of saved and frequently used colors
- Ability to route colors through ICC management or directly to print heads
- Any length can be printed from a small file containing a single repeat
- Plug-and-play Imaging Configurations for superior out-of-the box color

### Advanced Workflow Features Help Power Your Production

- Wasatch Cost Estimator saves you time and money by giving you an accurate view of your costs before you start production
- Hot folders allow you to print directly from any application or operating system
- Wasatch ImageNET™ allows you to print directly from any networked Mac, PC, or Unix workstation
- Automated image rotation increases Smart Nesting media savings
- Direct-to-layout workflow nests new images with RIP'd jobs
- Tiling features allow for easy printing of oversized images

### Easy Color Tools for Great Out-of-the-Box Color

- 16-bit rendering reproduces color with the greatest level of intricacy for high-definition output
- Easy-to-use Correction Curves to make color adjustments as you would in standard design applications
- Color control in four different input color spaces to get colors that pop and match SWOP in the same job
- Master Color Transforms flowchart shows users how their color moves from file to printed page
- Advanced tools for indexed and spot colors, including a spot color capture tool for handheld colorimeters

### Simple Workflow Features Get You Up and Running Fast

- The ability to drive up to four printers simultaneously allows you to manage any print production environment
- The Digital Tool Kit puts key file preparation tasks on the main screen so you're ready to RIP fast
- Easy workflow options for processing files individually or as part of a complete layout
- Smart Nesting to create media- and time-saving layouts automatically
- Master Queues Manager for tracking the status of your production in real time
- Quick printer setup that requires no previous RIP experience
- Interactive real-time preview and detailed image attribute display allow for accurate image adjustments
- Cropping feature RIPs only selected areas, instead of entire page, speeding up processing

Modified 02 Feb 15