



FEATURES

All SoftRIP tools for efficient, high quality printing with a special price just for HP users

Available premium driver pack for printing with HP solvent devices

Plug-and-play ICC color profiles for great color right away

Advanced tools for spot color replacement, color correction, and gamut management

PSS halftoning with 16-bit rendering for high-definition color quality

Smart Nesting™ to create media and time saving layouts automatically

Master Queues Manager™ for tracking the status of your production in real-time

Wasatch ImageNET® to print directly from networked Mac, PC or Unix workstations

Intuitive tools for sizing, cropping, tiling, archiving and more



333 South 300 East
Salt Lake City, UT 84111, USA
+1.801.575.8043
800.894.1544

www.wasatch.com/hp.html



HP
EXCLUSIVE
EDITION

WASATCH SOFTRIP® EXCLUSIVE

When you invest in an HP Printer, you want to make sure you can get the high quality results you expect.

Wasatch RIP and Print Management software is used by leading sign shops and CAD professionals around the world. With the HP Exclusive Edition, you get the premium RIP features you need at an entry-level price.

The SoftRIP HP Edition comes with all drivers for indoor aqueous devices. The optional premium driver-pack extends the power of SoftRIP to use with your Solvent HP printer as well.

Don't settle for a stripped-down "light" RIP. Achieve dynamic color and efficient workflows with Wasatch. Ask your reseller for pricing details.

Unbeatable Color.

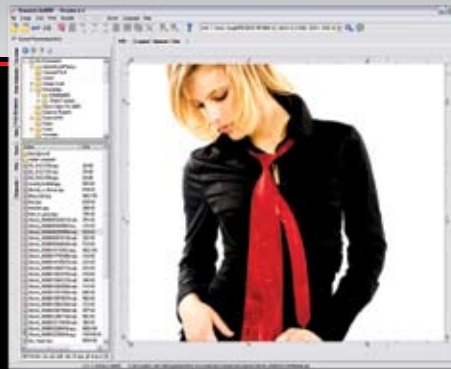
Amazing Precision.



QUALITY

SoftRIP is the solution that color experts choose most. With 16-bit color rendering and our exclusive Precision Stochastic Screens™ Halftone Method, Wasatch achieves excellent color reproduction with perfectly smooth gradients.

Beginners look like pros with easy plug-and-play imaging configurations, and experts have all the tools they need to implement even the most complex color workflows.



POWER

SoftRIP can manage any print environment from a single printer to a complex multiple device production plant. Our intuitive Direct-to-Layout interface makes it easy to prepare images to print as part of your overall production run.

When you're ready to print, create efficient layouts with SoftRIP Smart Nesting. Combine RIP'd files with new jobs and even rotate pre-RIP'd images to conserve media while achieving your specific printing objectives. With Wasatch, your workflow really flows.

EASY

You don't need to be an expert to print like one. Wasatch has the features you need with the simplicity you'll love.

SoftRIP puts all your key tools right on the home page to save you time and effort. Use the Digital Tool Kit™ to get your images ready to print and the simple Workflow tabs to process them through production.

Even printer setup is fast with SoftRIP. Pick your printer, your profile, and your physical connection. Within less than a minute you're ready to RIP.



EASY.

